

XBOX Controller Controller

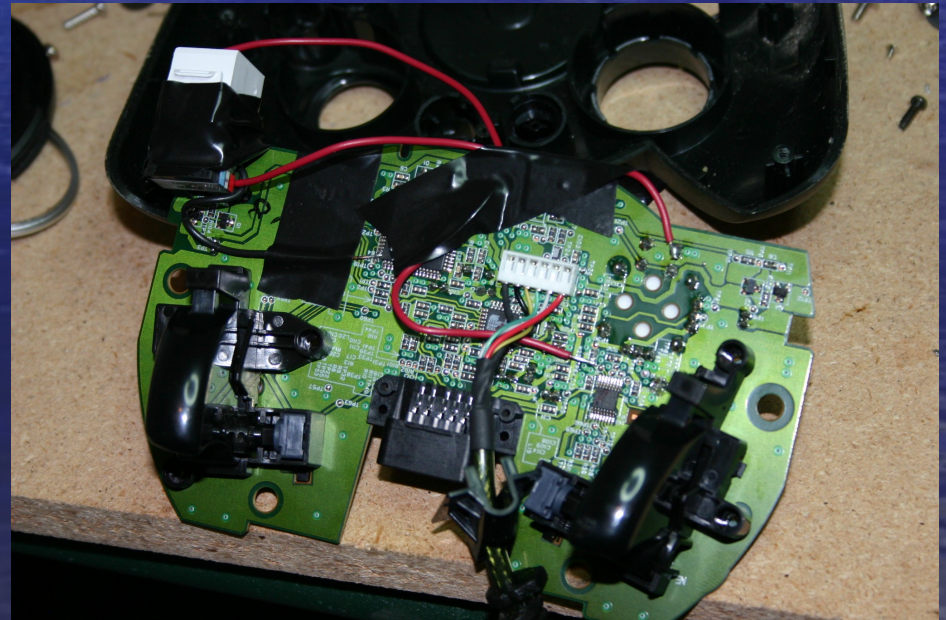
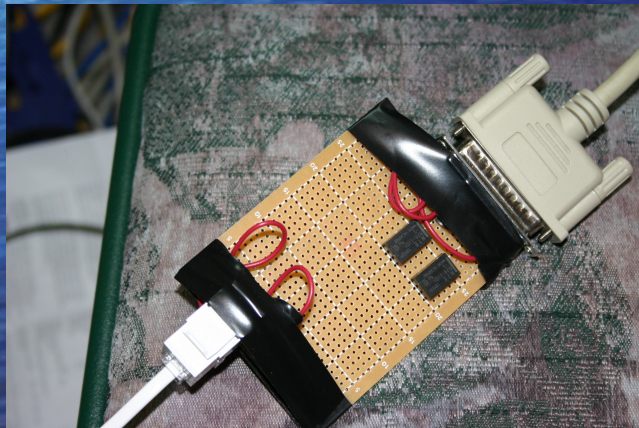
Tony Morelli

CPE606

5/2/2006

Background

- Previous Version Required Breaking a Controller
- Also Required hard wiring to a parallel port



Components

- Playstation Portable as controller



Components

- Gumstix as Receiver



Components

- Basic Stamp 2 as Servo Controller



Components

- Servos as arms



PSP Software

- PSP Polls Buttons every 250 ms
- Sends Current Button status to gumstix over UDP

Gumstix Software

- Contains 2 Threads
- Thread 1 Listens for UDP broadcast from remote controller and updates global variables
- Thread 2 Writes commands to Basic Stamp out COM port every 250 ms

Basic Stamp 2 Software

- Reads commands off of serial port at 38400 baud
- Sends commands to servos

Servos



XBOX Controller Controller

